

“COMFORT & PROTECTION”

Exceptional comfort
and protection

Excellent antistatic
properties

Carefully researched,
designed & constructed

Processed to ensure
ISO Class 4 compatibility

Low-linting
and durable

Thumb loop to
ensure a secure hold



MASTER CODE

SPECIFICATIONS

PACKAGING

PRODUCT CERTIFICATIONS

S-BDCCT

ISO Class 4 compatible

One coverall per sealed PE bag;
One sealed PE bag per sealed outer PE bag;
20 coveralls per carton liner;
One carton liner per carton (20 coveralls);
(XXXL & XXXXL 15 coveralls)



GB10/81851

GB04/61092

UK e-mail: info@nitritex.com
Tel: +44 (0) 1638 663338
Fax: +44 (0) 1638 668890
Nitritex Ltd, CB8 7YY, United Kingdom

Nitritex
www.nitritex.com

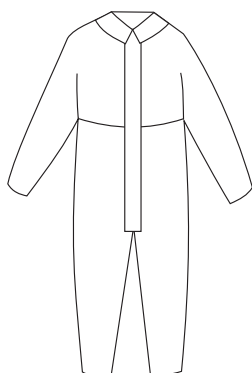
MASTER CODE

S-BDCCT

RE-ORDER CODE SIZE

S-BDCCT-S	S
S-BDCCT-M	M
S-BDCCT-L	L
S-BDCCT-XL	XL
S-BDCCT-XXL	XXL
S-BDCCT-XXXL*	XXXL
S-BDCCT-XXXXL*	XXXXL

PRODUCT ILLUSTRATION



COLOUR:

White

FEATURES:

Zip front with flap cover. Thumb loops on wrist.
Elasticated back, cuffs and ankles

MATERIAL:

CleanTough™ fabric

SURFACE RESISTANCE:

Typical outside surface $4.4 \times 10^{11}\Omega$
Typical inside surface $4.0 \times 10^9\Omega$

PRINTING:

IPA-resistant ink ensures that bags can be wiped down with cleaning or sterilizing fluids without fear of cross-contamination from printing inks

QUALITY SYSTEMS:

Manufactured in a facility holding ISO 9001:2008 certification

STERILIZATION METHOD:

Gamma irradiation

SAMPLING & INSPECTION:

In accordance with ISO 2859

STORAGE INSTRUCTIONS:

Store in a dry, cool place ($<30^\circ\text{C}$) away from direct sunlight

BAR CODES:

Each size carries a unique bar code on the carton (ITF-14) to allow automatic data entry into Stock Control Systems

LOT NUMBER:

This is shown on each individual bag and the carton to provide product traceability

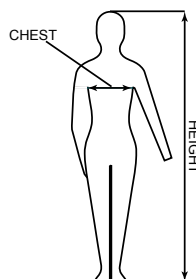
COMPATIBILITY:

ISO Class 4

PACKAGING:

One coverall per sealed PE bag;
One sealed PE bag per sealed outer PE bag;
20 coveralls per carton liner;
One carton liner per carton (20 coveralls);
(XXXL & XXXXL 15 coveralls)

SIZE CHART:



SIZING TABLE cm (ft/in)

Size	CHEST	HEIGHT
S	84-92 (33"-36")	164-170 (5'4"-5'6")
M	92-100 (36"-39")	170-176 (5'6"-5'9")
L	100-108 (39"-42")	176-182 (5'9"-6'0")
XL	108-116 (42"-45")	182-188 (6'0"-6'2")
XXL	116-124 (45"-48")	188-194 (6'2"-6'4")
*XXXL	124-132 (48"-51")	194-200 (6'4"-6'6")
*XXXXL	132-140 (51"-54")	200-206 (6'6"-6'8")

NOTES:

*S-BDCCT-XXXL and S-BDCCT-XXXXL
Non-stock item, minimum order 50 cartons